



LAUNDRY

STACKED WASHER & DRYER PTDM-1414



Configurations:

- Wet cleaning: Dryer equipped with FSC & power control
- Coin operated: Coin box or central cash payment system
- Can be gas, electric or steam powered

Options:

- Connection to detergent pumps
- Drain pump
- Hard water inlet
- FSC: Control of suction fan speed (Not available for gas)
- Power control: The electric heated dryer can work at full or partial power

STANDARD FEATURES

Washer Extractor Description

- IM 8: An intuitive touch screen computer with up to 200 programs in 15 different languages. Also equipped with a Large LCD screen making it easy to understand, use, and program with simple icons and photos
- IM 8 allows the user to customize wash cycles
- Half load programs with automatic reduction of washing level and detergent dosing available as well
- USB port: Allows for file downloads from machine to PC or from machine to machine
- GSM remote assistance: Each machine is equipped with a GSM module to allow for remote diagnosis and service

Tumble Dryer Description

- Drum in stainless steel AISI 304
- External panels painted with epoxy powder
- Huge fluff filter, easily cleaned
- IM 7 microprocessor with 30 customizable programs
- Self-diagnostic with 11 available languages
- Drying parameters can be temporarily modified while the program is running
- Cooling cycle at the end of the program, additional cooling can be programmed at the beginning as well the heating cycle is composed of freely programmable steps
- The no wrinkle cycle ensures the finishing is easier, complimented by the universal drying of the reversing drum equipped with dry control. Great for delicate fabrics
- High safety: The cycle stops when the door is opened at any time

STACKED WASHER & DRYER

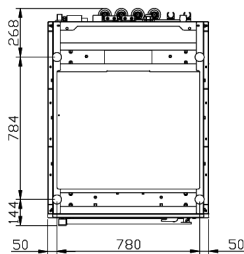
PTDM-1414

Technical Data

Washer capacity	14 Kg
Dryer capacity	14 Kg
Washer drum dimensions (ØxP)	700 mm x 365 mm (380 mm load Ø) (140L volume)
Dryer drum dimensions (ØxP)	756 mm x 585 mm (560 mm load Ø) (150 mm drain Ø)
Wash speed	40 RPM (500 RPM Low level) (946 RPM High level)
Dryer speed	10/50 RPM
Total washer power (Electric)	11 Kw (3 * 3 Kw) *6kWh consumption
Total dryer power (Heating element)	15 Kw (9 * 1.55 Kw) *15kWh consumption
G-factor	350
Total water consumption	234L (52L Low level) (59L High level)
Steam consumption	43 Kg (Dryer) 9 Kg (Washer) 1" inlet & outlet
Maximum vapor pressure	4.5 Bar (Washer) 14 Bar (Dryer)
Gas heating power (Dryer)	14Kw 2 burners ¾" connection
Machine dimensions (LxWxH)	976 mm x 880 mm x 2161 mm
Packing dimensions (LxWxH)	1150 mm x 1000 mm x 2287 mm
Packing dimensions (LxWxH)	1150 mm x 1000 mm x 1335 mm (Washer only)
Packing dimensions (LxWxH)	1150 mm x 1000 mm x 1420 mm (Dryer only)
Net weight	580 Kg, 390 Kg (Washer), 190 Kg (Dryer)

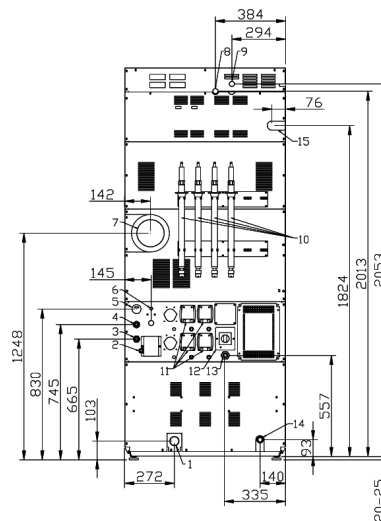
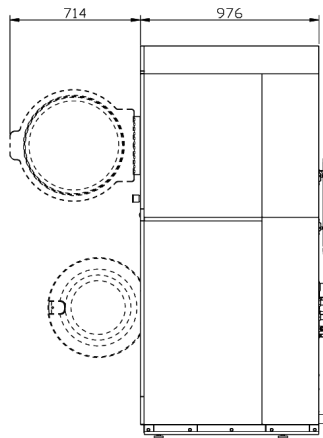
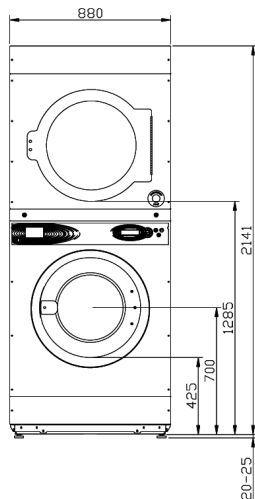
STACKED WASHER & DRYER PTDM-1414

Detail & Dimensions



MACHINE FRONT

- | | |
|--|------------------------|
| 1 - Drain Ø 50 mm | 9 - Steam inlet 1" |
| 2 - External connections | 10 - Detergent lance |
| 3 - Cold water inlet 3/4" - Press 0,5 ÷ 10 bar | 11 - Detergent pump |
| 4 - Hot water inlet 3/4" - Press 0,5 ÷ 10 bar | 12 - Main switch |
| 5 - Bleed | 13 - Electrical power |
| 6 - Steam inlet 3/4" | 14 - Steam outlet 3/4" |
| 7 - Humid air exhaust Ø 150 mm | 15 - Gas supply 3/4" |
| 8 - Steam outlet 1" | |



As continued product improvement is a policy of Powerline, specifications are subject to change without notice.



POWERLINE EQUIPMENT COMPANY

Pulaski Street, Norwalk, CT 06851 USA. Tel: 203-847 2357 Fax: 203-847 6480

www.powerlinelaundry.com