



LAUNDRY

WASHER EXTRACTOR PLM-11



STANDARD FEATURES

- Top, frontal, and side panels in stainless steel AISI 304
- Drum and outer drum in stainless steel AISI 304
- Free standing: Ground fixing not needed
- IM8: An intuitive touch screen computer with up to 200 programs in 15 different languages. Also equipped with a large LCD screen making it easy to understand, use, and program with simple icons and photos.
- IM 8 allows the user to easily customize wash cycles
- Half load programs with automatic reduction of washing level and detergent dosing are available as well
- USB port: Allows for file downloads from machine to Pc or from machine to machine
- Ergonomics: The display is tilted to avoid any reflection on the screen, It's large door diameter makes the loading/unloading easier

AVAILABLE OPTIONS

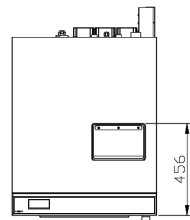
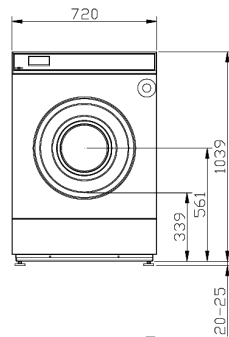
- Connection to automatic detergent pumps
- Water recovery system: The water from the last rinse is used in the first cycle of the next immediate program.
- Drain pump &/or hard water inlet
- Weighting system: Loaded linen weight is displayed on IM 8 screen
- Wet cleaning: 6 detergent pumps on trolley and holed door glass for injection
- Coin operated: Coin box, prepaid key or central cash
- Gas, steam, or electric power

WASHER EXTRACTOR PLM-11

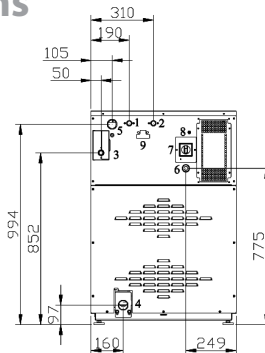
Technical Data

Washer capacity	11 Kg
Drum dimensions (ØxP)	535 mm x 470 mm (282 mm load Ø)
Wash speed	40 RPM (500 RPM Low level) (1002 RPM High level)
Electric heating element (Total power)	3 x 3 kW (10.5 Kw) *4kWh consumption
G- factor	300
Drum volume	105L
Water consumption	169L (37L Low level) (43L High level)
Steam consumption (Max. pressure)	6 Kg (4.5 Bar) *1.5kW total power
Machine dimensions (LxWxH)	884 mm x 720 mm x 1059 mm
Packing dimensions (LxWxH)	1045 mm x 760 mm x 1180 mm
Gross weight / Net weight	269 Kg / 264 Kg

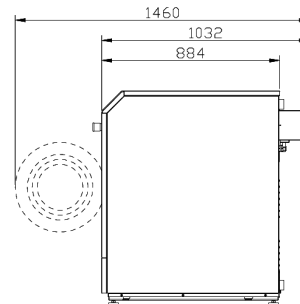
Detail & Dimensions



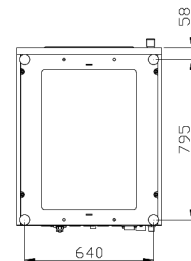
MACHINE FRONT



- 1 - Cold water inlet 3/4" - Press 0,5 ÷ 10 bar
- 2 - Hot water inlet 3/4" - Press 0,5 ÷ 10 bar
- 3 - Steam inlet 3/4"
- 4 - Drain Ø50 mm
- 5 - Bleed
- 6 - Electrical power
- 7 - Main switch
- 8 - Fuse
- 9 - External connections



DISTANCE
BETWEEN FIXING



As continued product improvement is a policy of Powerline, specifications are subject to change without notice.



POWERLINE EQUIPMENT COMPANY

Pulaski Street, Norwalk, CT 06851 USA. Tel: 203-847 2357 Fax: 203-847 6480

www.powerlinelaundry.com