



LAUNDRY

ON-PREMISE DRYER **PD-120**



AVAILABLE OPTIONS

- Microprocessor control with preprogrammed cycles.
- SS cabinet, sides &/or basket
- Air re-circulating system
- Rotational sensor
- Stainless steel lint filter
- Humidity sensor for energy & time saving
- Fire suppression system

STANDARD FEATURES

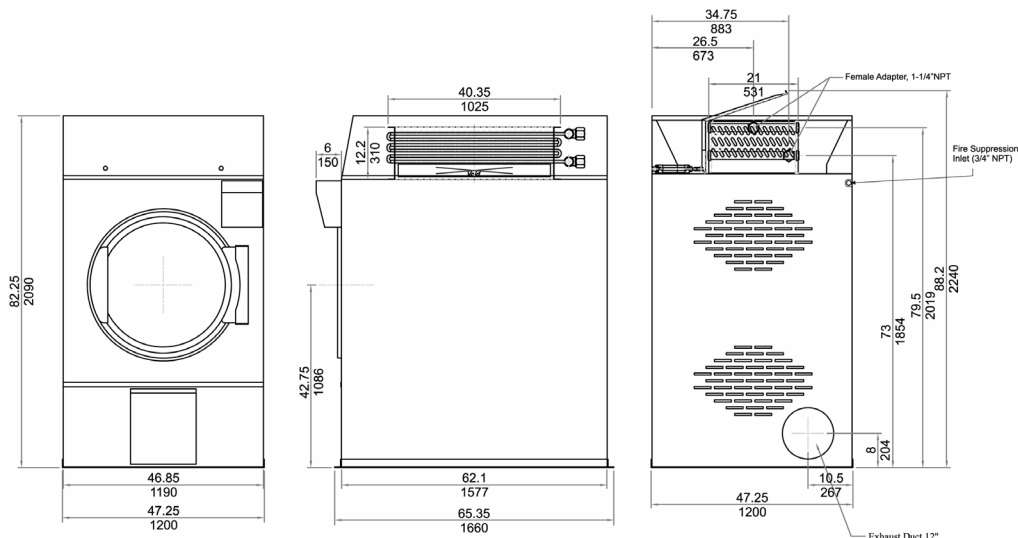
- Heavy duty steel cabinet- powder finished
- V-belt drive system
- Cool down overload protection
- Dual timer: Cooling & drying
- Galvanized cylinder with large strong door
- Three phase reversing cylinder
- Automatic blower cleaning
- Large door opening and reliable door lock
Make loading and unloading fast with the 180 degree flexibility of the door. No gasket needed! Magnetically sealed and protected, Machine is stopped whenever the door is opened. The door can be opened at any time you please.
- Fully enclosed heavy duty drive motor
- Advanced microprocessor monitors temperature, drying action and performance. Equipped with a cool down and anti-wrinkle features allow the computer to enhance safety by monitoring airflow.
- Rugged construction: Double sealed bearings with cast iron pulleys. Heavy gauge steel and welded design with stainless steel driving cylinder
- Assisted heating through instantaneous gas burners and steam damper that maintains steam intake
- Standard voltages: 380-415/50/3, 208-240/50/60/3 or 440-460/60/3

ON-PREMISE DRYER PD-120

Technical Data

Dryer capacity	54.43 Kg (120 lbs)
Basket dimensions (Ø x P)	1130 mm x 1076 mm
Basket motor	.75 kW 1 HP
Blower motor (Gas/Steam)	2.24 kW 3 HP
Air flow	60.2cmm (Gas) 77.9cmm (Steam) 60.1cmm (Electric)
Exhaust duct	305 mm (Gas/Steam/Electric)
Steam supply & return (Gas Inlet)	25.4 mm, 19.1 mm (25.4 mm)
Power consumption	203.45 Kg/hr (Steam) 72 kW (Electric) 375000 btu/hr. (Gas)
Basket volume	1080L 1.08m ³
Machine dimensions (LxWxH)	1660 mm x 1200 mm x 2090 mm
Net weight	682Kg (Gas) 702Kg (Steam) 702Kg (Electric)
Shipping weight	702Kg (Gas) 731 Kg (Steam) 722Kg (Electric)

Detail & Dimensions



As continued product improvement is a policy of Powerline, specifications are subject to change without notice.



POWERLINE EQUIPMENT COMPANY

Pulaski Street, Norwalk, CT 06851 USA. Tel: 203-847 2357 Fax: 203-847 6480

www.powerlinelaundry.com