



LAUNDRY

## LAUNDRY PRESS LPM-19



This Powerline Mushroom Press is a top class unit. Featuring a steel wool buck firmly padded with two flannel pads & XL color coded buttons, ensuring ease of operation. Its dual hydraulic check cushions motions & reduces noise. This unit is also equipped with a dual cylinder system that maximizes efficiency.

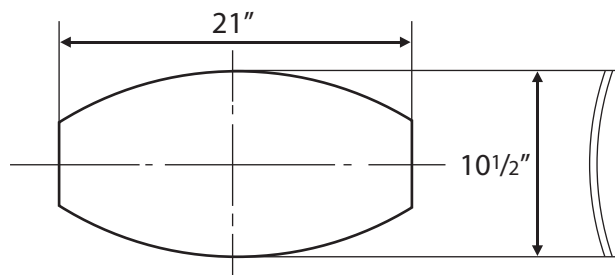
### STANDARD REQUIREMENTS

- 3/8" NPT for compressed air operation
- 1/2" NPT inlet & outlet for steam operation

### Technical Data

Steam consumption (Air)	10 Kg/Hr (0.01m <sup>3</sup> )
Steam pressure (Air)	6.9bar (5.5 bar)
Machine dimensions (LxWxH)	935 mm x 940 mm x 1220 mm (36.81" x 37.01" x 48.03")
Shipping dimensions (LxWxH)	1140 mm x 1140 mm x 1420 mm (44.88" x 44.88" x 55.91")
Net weight	213 Kg (469.59 lbs.)
Gross weight	259 Kg (571 lbs.)

### Detail & Dimensions



As continued product improvement is a policy of Powerline, specifications are subject to change without notice.



### POWERLINE EQUIPMENT COMPANY

Pulaski Street, Norwalk, CT 06851 USA. Tel: 203-847 2357 Fax: 203-847 6480

[www.powerlineequip.com](http://www.powerlineequip.com)