



LAUNDRY

WASHER EXTRACTOR SI-135



AVAILABLE OPTIONS

- Tilt one way for easy unloading
- Tilt two way for loading and unloading
- Direct steam heating
- Additional drain outlet
- Air cushion suspension system
- Water reuse inlet and drain
- EMI filter for CE
- PC programming kit

STANDARD FEATURES

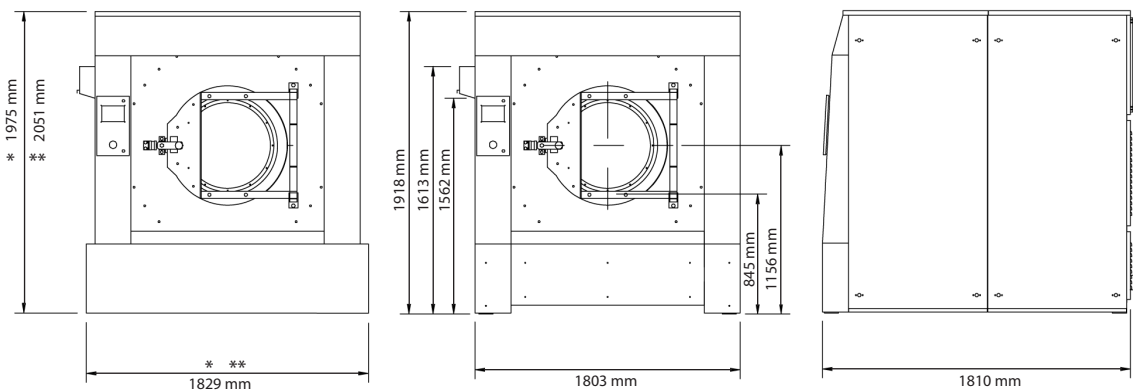
- Heavy duty frame
- Stainless steel panels
- All wetted parts are stainless
- Air operated door gasket
- Large door opening and reliable door lock make loading and unloading fast with the 180 degree flexibility of the door. The silicon door gasket seals to the shell every time without fail
- 5 compartment supply dispensers for both liquid and detergent. They are automatically flushed during each cycle
- 6 external liquid supply connections
- Fully enclosed heavy duty drive motor
- Bearings outside the wash solution
- 320G aided extraction speed allows for a save in money and time, minimizing
- 3 degree leanback for lower bearing loads
- Heavy duty suspension system
- Water reuse capable
- The PUNP microprocessor touch screen control center is easy to use and equipped with all needed features to ensure maximum productivity at the lowest cost of operation. The easily programmed 4 language display controls temperature, water levels, speed, and maintenance intervals.
- Fully enclosed and protected motor, V-belt transmission, and pulleys guarantee longevity.
- This fully stainless freestanding industrial machine is built to last
- Standard voltages: 380-415/50/3, 208-240/50/60/3 or 440-460/60/3

WASHER EXTRACTOR SI-135

Technical Data

Washer capacity	61.24 Kg (135 lbs.)
Drum dimensions (Ø x P)	1092 mm x 635 mm
Door dimensions (Ø x h)	622 mm x 845 mm
Motor	7.5 kW 10 HP
Wash speed	36 RPM 0.8 G
Extraction speed (Distribution)	286 RPM (#1) 725 RPM (#2) (64 RPM)
Drain system	101.6mm outlet 1643L/min capacity 1(2) drain outlet(s)
Chemical supply system	5 dry chemical compartments & liquid supply connections (.5")
Basket volume	600L .6m ³
Inlets	1" (Water) 3/4" (Steam) 2 water inlets 1 steam
Electrical consumption (Steam)	36kW (88 kg/hr.)
Machine dimensions (LxWxH)	1810 mm x 1803 mm x 1918 mm
Net weight (Shipping)	2321 Kg (2390 Kg)

Detail & Dimensions



* One-way Tilt
** Two-way Tilt

As continued product improvement is a policy of Powerline, specifications are subject to change without notice.



POWERLINE EQUIPMENT COMPANY

Pulaski Street, Norwalk, CT 06851 USA. Tel: 203-847 2357 Fax: 203-847 6480

www.powerlinelaundry.com