



LAUNDRY

WASHER EXTRACTOR SP-40



STANDARD FEATURES

- Rugged cast iron bearing housing
- Freestanding construction greatly reducing installation expenses
- Greaseable seals yield longer life and are completely resistant to any leakage
- 350G aided extraction speed allows for a save in money and time, minimizing
- Water reuse capable
- The PUNP microprocessor touch screen control center is easy to use and equipped with all needed features to ensure maximum productivity at the lowest cost of operation. The easily programmed 4 language display controls temperature, water levels, speed, and maintenance intervals.
- Fully enclosed and protected motor, V-belt transmission, and pulleys guarantee longevity
- Standard voltages: 380-415/50/3, 208-240/50/60/3 or 440-460/60/3

AVAILABLE OPTIONS

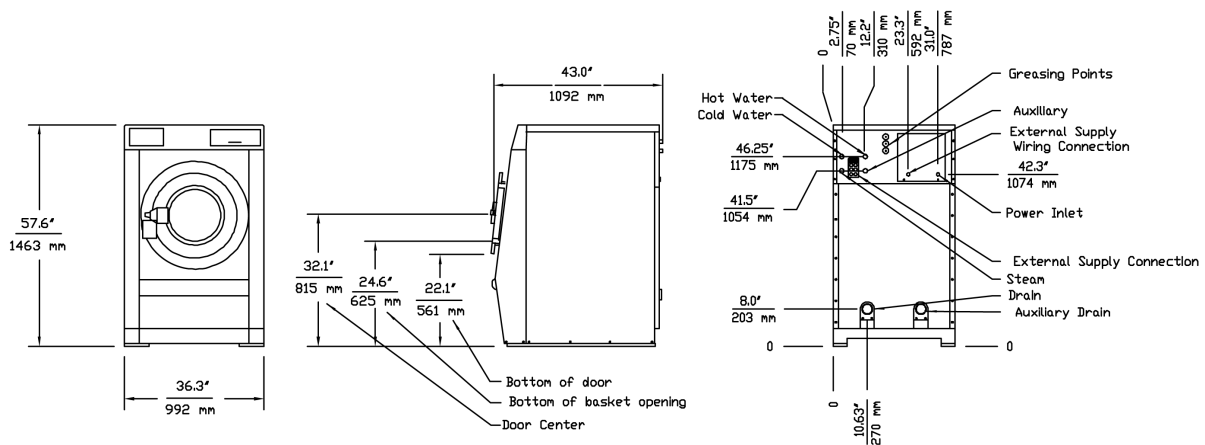
- Direct steam heating or electric heating
- PH testing point
- Pneumatic or S.S. valves (Water or Steam)
- Touch screen control
- EMI filter for CE or low voltage
- Viton seals

WASHER EXTRACTOR SP-40

Technical Data

Washer capacity	18.14 Kg (40 lbs.)
Drum dimensions (Ø x P)	680 mm x 525 mm
Door dimensions (Ø x h)	365 mm x 590 mm
Motor	2.2 kW 3 HP
Wash speed	46 RPM 0.8 G
Extraction speed (Distribution)	363 RPM (#1) 890 RPM (#2) (73 RPM)
Drain system	76.2 mm outlet 739L/min capacity 1(2) drain outlet(s)
Steam pressure	8 bar
Basket volume	190L .19m ³
Inlets	3/4" (Water) 1/2" (Steam) 2 water inlets 1 steam
Electrical consumption (Steam)	12kW (63 kg/hr.)
Machine dimensions (LxWxH)	1092 mm x 992 mm x 1463 mm
Net weight (Shipping)	541 Kg (564 Kg)

Detail & Dimensions



As continued product improvement is a policy of Powerline, specifications are subject to change without notice.



POWERLINE EQUIPMENT COMPANY

Pulaski Street, Norwalk, CT 06851 USA. Tel: 203-847 2357 Fax: 203-847 6480

www.powerlinelaundry.com