



LAUNDRY

WASHER EXTRACTOR HE-80



STANDARD FEATURES

- Rugged cast iron bearing housing
- Fixed mount construction
- Greaseable seals yield longer life and are completely resistant to any leakage
- Water reuse capable
- Power flexible control: EL 6 is easy to use. This microprocessor controls temperatures, water levels, speeds and maintenance intervals. With the ultimate flexibility in programming, even things such as time and cycle #, along with anything else necessary to meet the needs of the user.
- Fully enclosed and protected motor, V-belt transmission, and pulleys guarantee longevity.
- Standard voltages: 380-415/50/3, 208-240/50/60/3 or 440-460/60/3

AVAILABLE OPTIONS

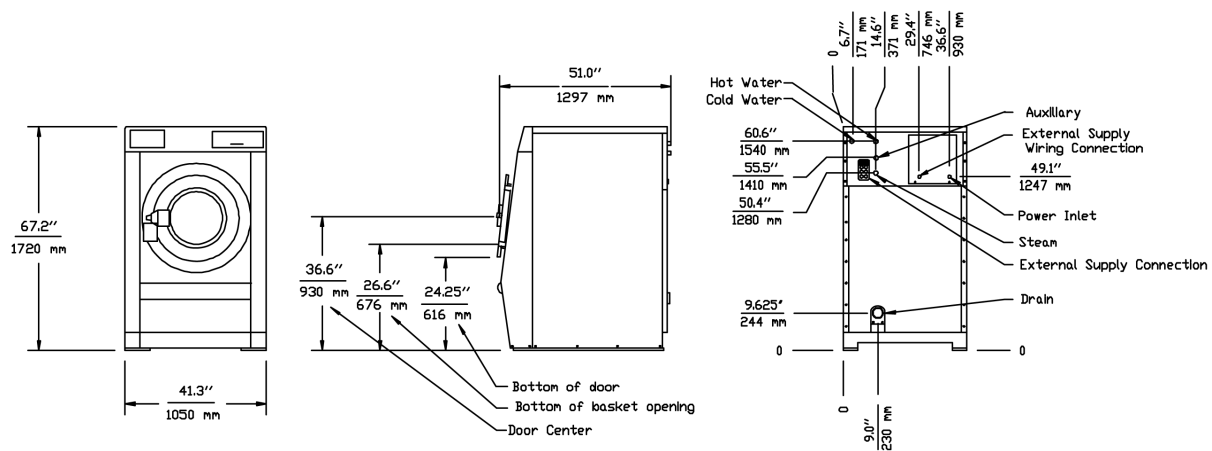
- Stainless steel side, top, & rear panels
- Direct steam heating
- Additional drain outlet
- Air cushion suspension system
- Water reuse inlet and drain
- EMI filter for CE
- PC programing kit

WASHER EXTRACTOR HE-80

Technical Data

Washer capacity	36.29 Kg (80 lbs.)
Drum dimensions (Ø x P)	920 mm x 574 mm
Door dimensions (Ø x h)	510 mm x 610 mm
Motor	5.5 kW 7.5 HP
Wash speed	39.5 RPM 0.8 G
Extraction speed (Distribution)	534 RPM (62 RPM)
Drain system	76.2mm outlet 581L/min capacity 1(2) drain outlet(s)
Basket volume	400L .4m ³
Inlets	3/4" (Steam) 3/4" (Water) 2 water inlets 1 steam
Steam consumption (Pressure)	56.3 kg/hr. (6 bar)
Machine dimensions (LxWxH)	1297 mm x 1050 mm x 1720 mm
Net weight (Shipping)	740 Kg (767 Kg)

Detail & Dimensions



As continued product improvement is a policy of Powerline, specifications are subject to change without notice.



POWERLINE EQUIPMENT COMPANY

Pulaski Street, Norwalk, CT 06851 USA. Tel: 203-847 2357 Fax: 203-847 6480

www.powerlinelaundry.com