



LAUNDRY

## WASHER EXTRACTOR HE-30



### STANDARD FEATURES

- Rugged cast iron bearing housing
- Fixed mount construction
- Greaseable seals yield longer life and are completely resistant to any leakage
- Water reuse capable
- Power flexible control: EL 6 is easy to use. This microprocessor controls temperatures, water levels, speeds and maintenance intervals. With the ultimate flexibility in programming, even things such as time and cycle #, along with anything else necessary to meet the needs of the user.
- Fully enclosed and protected motor, V-belt transmission, and pulleys guarantee longevity.
- Standard voltages: 380-415/50/3, 208-240/50/60/3 or 440-460/60/3

### AVAILABLE OPTIONS

- Stainless steel side, top, & rear panels
- Direct steam heating
- Additional drain outlet
- Air cushion suspension system
- Water reuse inlet and drain
- EMI filter for CE
- PC programming kit

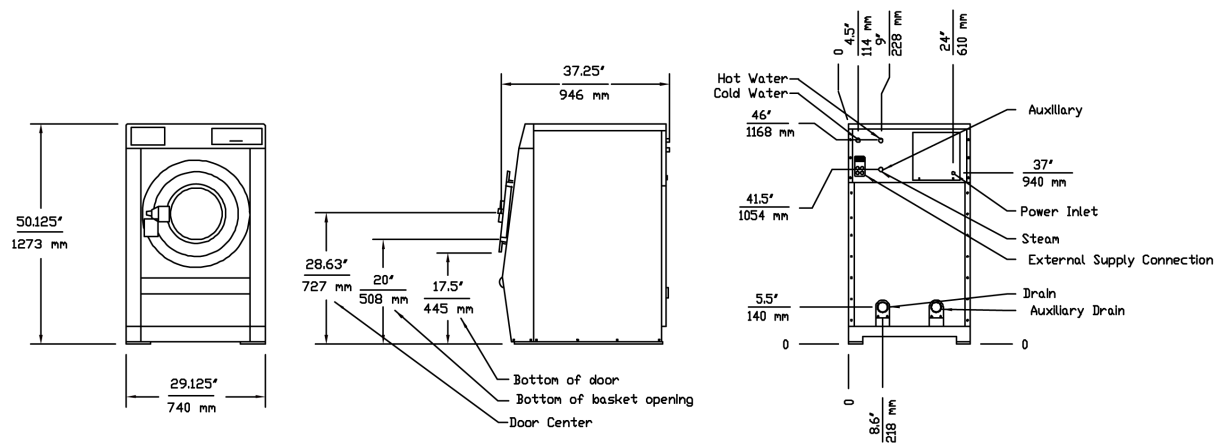


# WASHER EXTRACTOR HE-30

## Technical Data

Washer capacity	13.61 Kg (30 lbs.)
Drum dimensions (Ø x P)	610 mm x 470 mm
Door dimensions (Ø x h)	365 mm x 445 mm
Motor	1.5 kW 2 HP
Wash speed	48.5 RPM 0.8 G
Extraction speed (Distribution)	664 RPM (77 RPM)
Drain system	50.8mm outlet 117L/min capacity 1(2) drain outlet(s)
Basket volume	140L .14m <sup>3</sup>
Inlets	1/2" (Steam) 3/4" (Water) 2 water inlets 1 steam
Steam consumption (Pressure)	11 kg/hr. (6 bar)
Machine dimensions (LxWxH)	946 mm x 740 mm x 1273 mm
Net weight (Shipping)	286 Kg (302 Kg)

## Detail & Dimensions



As continued product improvement is a policy of Powerline, specifications are subject to change without notice.



## POWERLINE EQUIPMENT COMPANY

Pulaski Street, Norwalk, CT 06851 USA. Tel: 203-847 2357 Fax: 203-847 6480

[www.powerlinelaundry.com](http://www.powerlinelaundry.com)